

Designed to weld:

- Aluminium
- Steel
- Steel

TIG AC : 10A ▷ 200A
TIG DC : 5A ▷ 160A
MMA : 10A ▷ 160A



Water cooling unit (option)
400W - ref. 041271

INTERFACE

From the INVERTER technology, the TIG 200 AC/DC HF FV is controlled by a micro-processor with a digital panel.
5 Memories : To save settings.

TIG 207

✓ Starting Up:



Adjust
Ideal
Position

- 2 possibilities: HF without contact or LIFT with contact
- Integrated Automatism: «Adjust Ideal Position»

The system helps you to position the electrode before the current increase. A weak intensity is delivered, acting like a « light beam » (Available in 4T et 4Tlog).

✓ 3 trigger mode:

- 2 Times
- 4 Times
- 4 Times «LOG»: The operator can choose at any moment by shortly pressing the trigger 2 welding current.(Hot current and cold current).

✓ Automatic Torch Detection:

Possibility to connect a simple or double button torch, with or without built-in potentiometer.

✓ 3 AC/DC mode:

- **TIG:** Common settings AC and DC: pre-gas / current increase / intensity (1 or 2 intensity possible in 4Tlog mode)/ Post-gas / down slope.
Specific settings for AC:
 - Balance (20 à 60 %) cleaning / penetration
 - Frequency to localize the arc with precision (20 à 200 Hz)
 -> Manual or automatic (AC Easy function)
- **TIG Pulsed:** - **Easy Pulse Mode:** The operator sets the average welding current. The device automatically adapts the frequency, the hot current and cold current.
- **Normal Mode:** The operator sets the hot and cold current as well as the frequency.
- **TIG SPOT:** Allows to prepare parts by doing spot welding.

✓ Front plug for remote control:

To connect a foot pedal for TIG (ref.045682) or a manual remote control (ref.045675)



Supplied with accessories – ref.011618 :

- TIG torch TIG SR26DB (4m)
- consumables box
- earth clamp (2m / ø25mm²)
- electrode holder (2m / ø25mm²)

Also available without accessories

– ref.011625



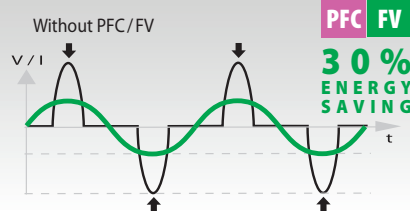
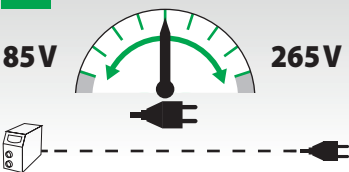
MMA

- Welds steel, stainless steel, cast iron, rutile or basic electrodes.
- The product features Anti-Sticking, Hot Start and Adjustable Arc Force.

HIGH-TEC POWER SUPPLY

PFC POWER FACTOR CORRECTION

FV FLEXIBLE VOLTAGE



The TIG 200 AC/DC has a powerful integrated PFC and features FLEXIBLE VOLTAGE (85-265V).

The TIG 200 AC/DC will function on a standard 230V-13A / 110V-20A, even during intensive use with long extension leads (100m).

50/60hz	-AM-	I ₂			EN60974-1 (40°C)		U ₀	cm/kg	Protected & compatible POWER GENERATOR (+/- 15%)	
		TIG AC	TIG DC	MMA	I _A (60%)	X% (I ₂ max)				
230V 1~	13A	10-200A	5-160A	10-160A	95A	13%	70V	35/50	20x39x36 / 19	6 kW 7.5 kVA
110V 1~	20A	10-160A	5-160A	10-160A	90A	30%				